

What is a Nature Recovery Strategy?

Local Nature Recovery Strategies (LNRS) are defined by DEFRA as 'a system of spatial strategies for nature and environmental improvement'. 'Responsible Authorities' (typically County Councils) are required to publish their LNRS in accordance with the Local Nature Recovery Strategy Regulations. These strategies will be given weight in plan-making.¹

An LNRS 'will agree priorities for nature and propose actions in the locations where it would make a particular contribution to achieving those priorities'.² It will contain a local habitat map and a written statement of biodiversity priorities.



Gatekeeper butterfly

Source: Louis Harrington-Edmans



Hazel Dormouse

Source: Gareth Mathes

Haslemere falls within the Surrey LNRS area but borders the West Sussex LNRS area and the Hampshire LNRS area. In addition, many other organisations have plans for nature recovery - the Surrey Hills National Landscape (formerly the Surrey Hills Area of Outstanding Natural Beauty), Surrey Wildlife Trust (as well as the Wildlife Trusts for Hampshire and Sussex), the South Downs National Park Authority and the Woodland Trust.

¹The Environment (Local Nature Recovery Strategies) (Procedure) Regulations 2023

²<https://www.gov.uk/government/publications/local-nature-recovery-strategies/local-nature-recovery-strategies>



Why a Nature Recovery Strategy for Haslemere?

Actions to repair nature happen locally and the Haslemere Nature Recovery Strategy (NRS) will contain a focused set of priorities and actions that are specifically for our Parish. The NRS will provide a framework to ensure actions are coordinated and targeted and it will feed into the Surrey LNRS. Importantly, it will ensure that Haslemere's nature recovery priorities are effectively represented at county level. The NRS builds on the excellent nature conservation work already going on across the town by providing a common framework for action and a platform for dialogue and partnership.



Blackdown footpath

Source: Alex Anderson



Surrey Heathland

Source: Sonny Vermeer

Preparation of the NRS has been led by Haslemere Biodiversity in consultation with a wide range of other local stakeholders. It is underpinned by the following:

- The Biodiversity Audit of Haslemere's Ecological Network (HEN) 2021
- Analysis of land ownership across the HEN to identify landowners and managers for key sites
- An inventory of significant nature conservation projects undertaken across Haslemere over recent years

The HNRS will:

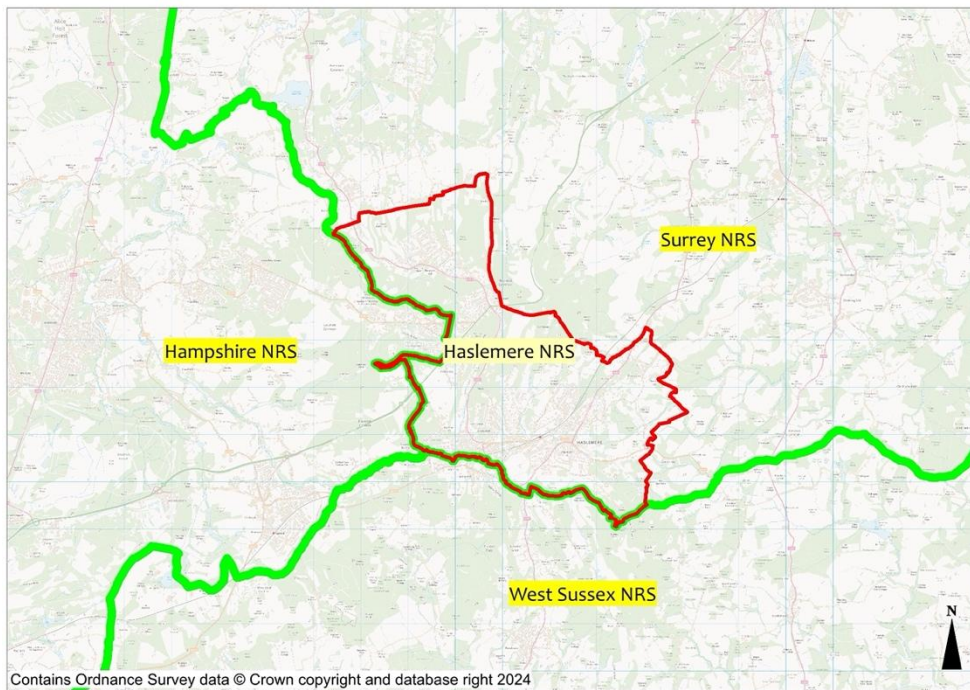
- Map the most valuable existing areas for nature
- Identify local priorities for nature recovery
- Advance specific proposals for creating and improving habitat for nature and wider environmental benefits



What area does our Nature Recovery Strategy cover?

The NRS covers the civil parish of Haslemere in southwest Surrey, around 39 mi (62 km) southwest of London. The Civil Parish is approximately 23 square km (2,319 Hectares) and encompasses the town of Haslemere, the villages of Shottermill, Critchmere and Grayswood, and the settlements of Hindhead and Beacon Hill, and the surrounding countryside.

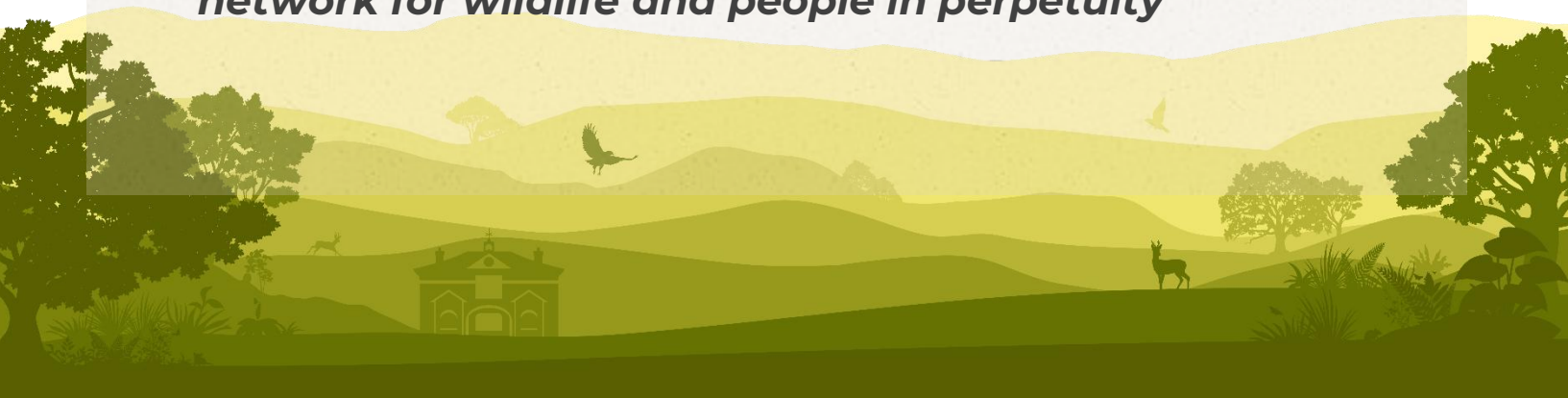
Haslemere NRS area and the surrounding NRS areas



What is the vision for Nature in Haslemere?

In late 2019, Haslemere Biodiversity was established, and they agreed the following mission statement for the NRS:

“To protect and enhance Haslemere’s unique ecological network for wildlife and people in perpetuity”



How is the NRS structured, what are its aims, and who will it be used by?

The NRS includes Opportunities, Priorities and Actions that will help to ensure:

- 1) Haslemere's biodiversity is protected
- 2) The decline in Haslemere's biodiversity is reversed
- 3) Important wildlife sites and habitats are restored, extend and enhanced using the 'Haslemere Ecological Network' (The HEN) as a starting point
- 4) New wildlife rich habitats are created
- 5) Haslemere's biodiversity is valued by its residents, landowners, local authorities, businesses, community groups and others with connections to the parish
- 6) Haslemere's biodiversity is resilient to climate change and will help mitigate its effects

It is intended to be used by people and organisations that manage land and/or are involved in nature conservation activities. Its intention is to direct and coordinate their actions to ensure a unified response to the biodiversity crisis. It will provide a source of evidence for local planning authorities and other stakeholders, helping to identify local opportunities and priorities for conserving and restoring biodiversity and to guide mandatory biodiversity net gain (BNG) investments.

Ongoing review

Implementation of the NRS will be overseen by Haslemere Biodiversity in partnership with Surrey County Council, Haslemere Town Council (HTC) and other key stakeholders. The delivery of the opportunities and actions will be monitored and reported on via our website [Haslemerebiodiversity.org.uk](https://haslemerebiodiversity.org.uk) and there will be regular reporting on progress to HTC and other partners. Based on these reviews, the strategy will be updated as required.

